

# ETERNAL LIGHT MEMORIAL GARDENS - V

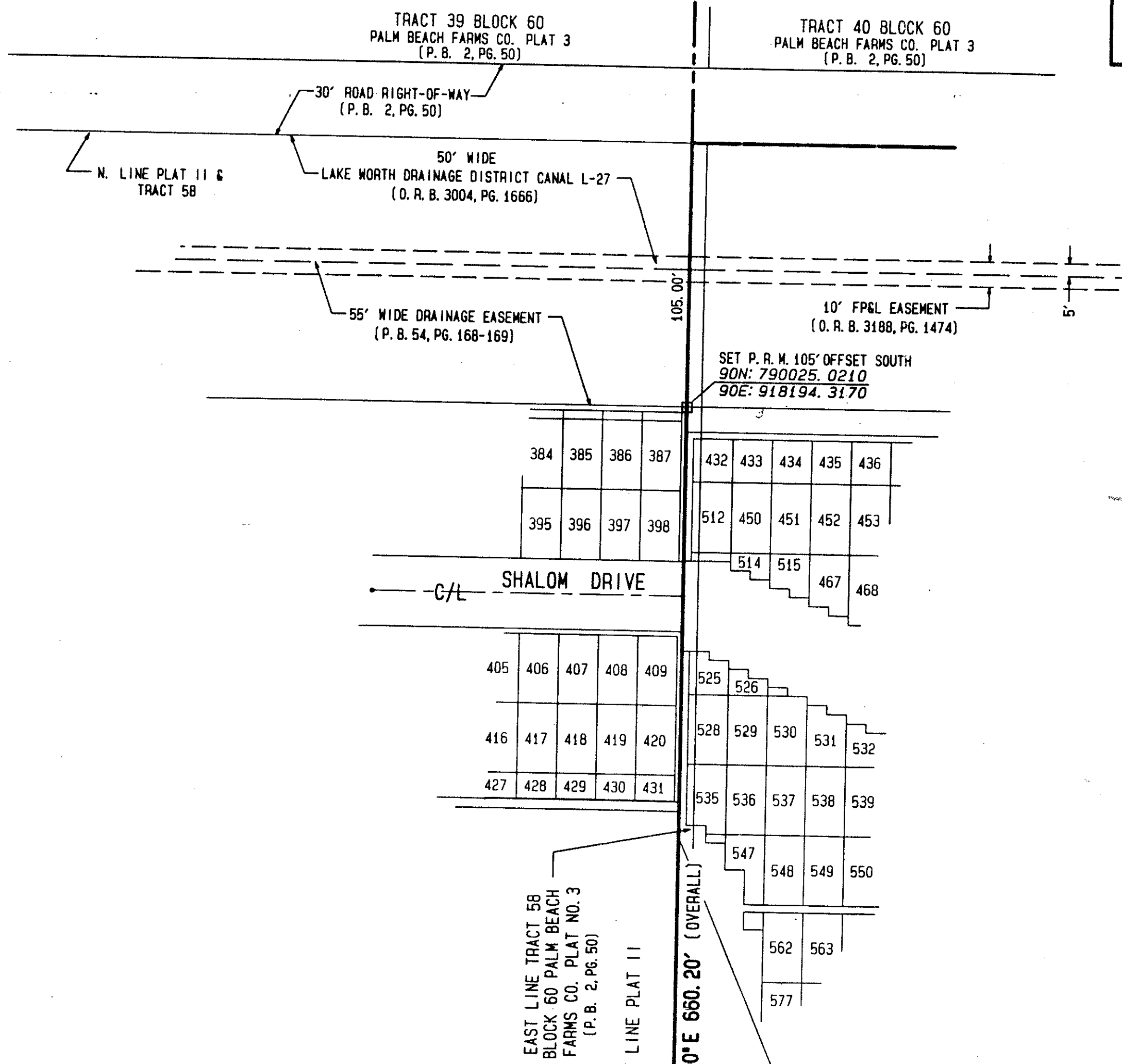
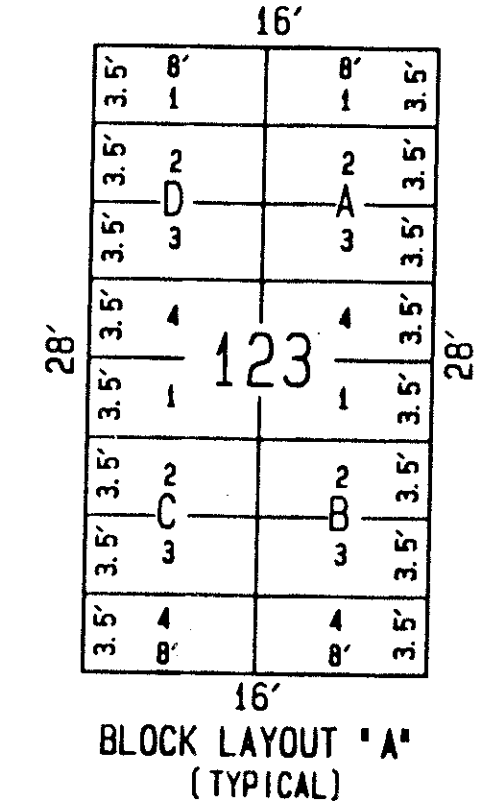
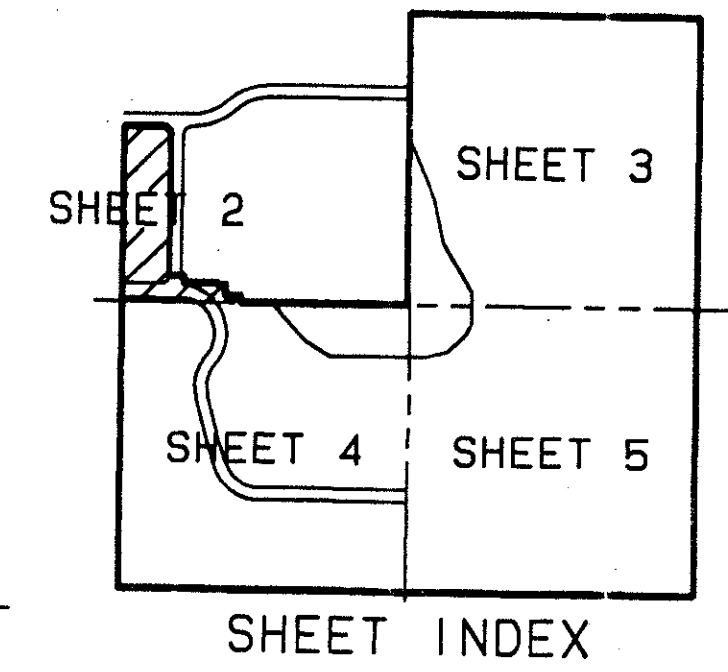
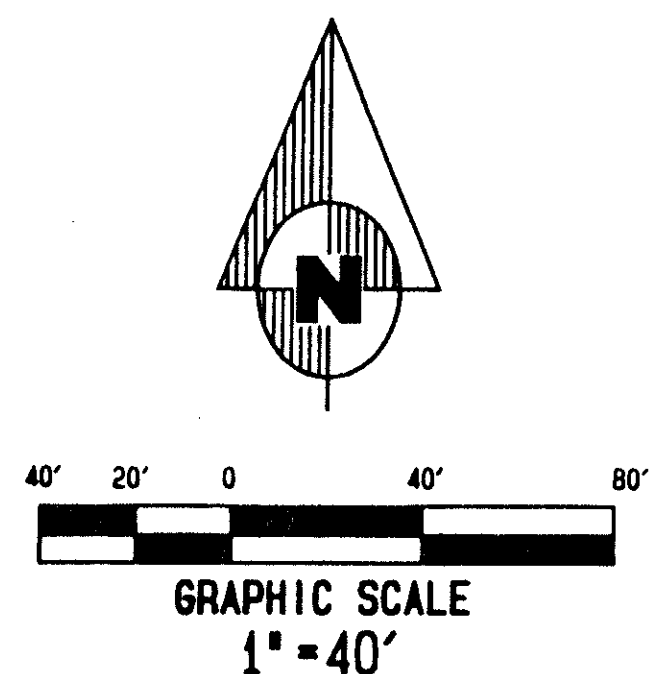
REPLAT OF A PORTION OF TRACTS 57 AND 58, ALL OF TRACT 64, BLOCK 60, ACCORDING TO THE PLAT OF PALM BEACH FARMS COMPANY PLAT No.3, AS RECORDED IN PLAT BOOK 2, PAGES 45 THROUGH 54, INCLUSIVE, PUBLIC RECORDS OF PALM BEACH COUNTY, FLORIDA; AND ETERNAL LIGHT MEMORIAL GARDENS - PLAT IV, ACCORDING TO THE PLAT THEREOF AS RECORDED IN PLAT BOOK 69, PAGES 6 THROUGH 7, INCLUSIVE, PUBLIC RECORDS OF PALM BEACH COUNTY, FLORIDA; AND A PORTION OF ETERNAL LIGHT MEMORIAL GARDENS - PLAT II, ACCORDING TO THE PLAT THEREOF AS RECORDED IN PLAT BOOK 54, PAGES 168 THROUGH 169, INCLUSIVE, PUBLIC RECORDS OF PALM BEACH COUNTY, FLORIDA.

LYING IN SECTION 31, TOWNSHIP 45 SOUTH, RANGE 42 EAST, PALM BEACH COUNTY, FLORIDA.

JANUARY 1998  
SHEET 2 OF 5

0416-003

70



**NOTES:**  
**COORDINATES, BEARINGS, & DISTANCES**  
COORDINATES SHOWN ARE GRID  
DATUM = NAD 83 1990 ADJUSTMENT  
ZONE = FLORIDA EAST  
LINEAR UNIT = US SURVEY FEET  
COORDINATE SYSTEM = 1983 STATE PLANE  
TRANSVERSE MERCATOR PROJECTION  
ALL DISTANCES ARE GROUND  
SCALE FACTOR = 1.00001871  
GROUND DISTANCE x SCALE FACTOR = GRID DISTANCE  
BEARING ROTATION PLAT TO GRID  
00°26'08" COUNTERCLOCKWISE

**LEGEND:**

- P.B. PLAT BOOK
- PG. PAGE
- P.R.M. PERMANENT REFERENCE MONUMENT
- Δ DELTA ANGLE
- A ARC LENGTH
- C.B. CHORD BEARING
- O.R.B. OFFICIAL RECORD BOOK
- D.B. DEED BOOK
- D.T. DRAINAGE TRACT
- F.P.&L. FLORIDA POWER & LIGHT CENTERLINE
- C/L CENTERLINE
- DENOTES SET P.R.M. UNLESS OTHERWISE NOTED
- DENOTES FOUND P.R.M. AS NOTED
- DENOTES SET PERMANENT CONTROL POINT (P.C.P.)

*Ret. 79-137*

BOOK NO. 69  
 PAGE 7D  
 FLOOD ZONE 6  
 ZONING AP 450  
 BE 79-137  
 PVD NAME ETERNAL LIGHT MEMORIAL GARDENS

*82/70*

*0916-003*

**Dailey-Fotorny, inc.**  
land surveyors - planners  
5050 10th Avenue North Suite A - Lake Worth FL 33463-2062  
Phone: 561-965-8787 Fax: 561-965-8963